

SP 4561 | 74 Shirley Road Wollstonecraft

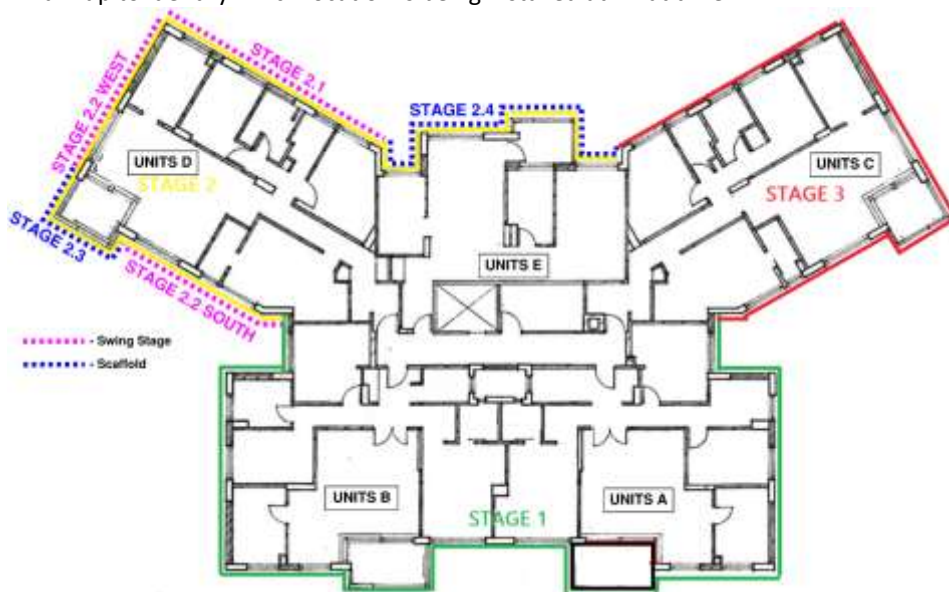
## Subject of Notice: Notice of Stage 2 Commencement

Date Notice Issued: 16/09/2025

Lot Impacted by this Notice: All D & E Units

Dear Resident and Owners,

Preservation Technologies are commencing stage 2 works shortly. Access will be installed in stages across the façades of Units D & E. Please refer the stage locations to the below mark up to identify which location is being installed at what time.



Stage 2.1: 29<sup>th</sup> of September

Stage 2.2 WEST: 29<sup>th</sup> of September

Stage 2.2 SOUTH: Start to Mid of October

Stage 2.3: Mid to Late of October

Stage 2.4: Start to Mid of October

Due to access being installed on the facades, we recommend blinds and windows are kept closed during the day for privacy and dust control.

Windows to Units D & E will be replaced during stage 2 works. A notice advising of the dates the windows will be replaced will be provided to occupants closer to the replacement date. This notice will advise regarding access requirements and window covering removal etc.

We will make every effort to minimize dust and noise throughout the process and **apologise for any inconvenience** this may cause.

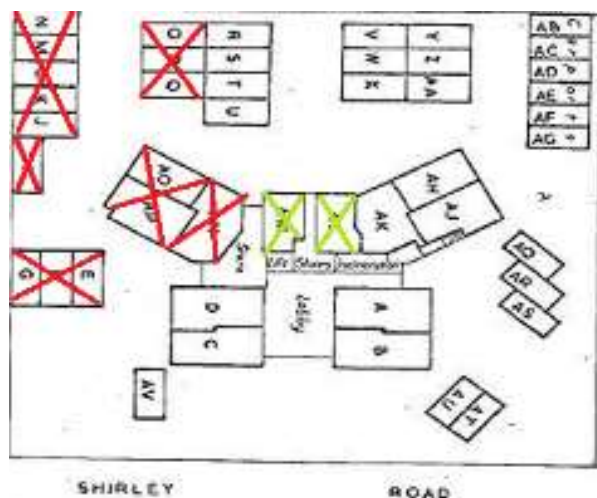
**GARAGES AND PARKING MARKED UP WILL ONLY BE BLOCKED DURING WORKING HOURS FROM 7:00AM TO 5:00PM MONDAY TO FRIDAY.**

**GARAGES AND PARKING WILL BE ABLE TO BE ACCESSED BY RESIDENTS AFTER HOURS.**

Garages and parking crossed out in red are affected by Stages 2.1 & 2.2 West. These parking spaces/garages will be inaccessible from the 29<sup>th</sup> of September 2025 to the end of the year – late December 2025.

Garages and parking crossed out in green are affected by Stage 2.4. These parking spaces/garages will be inaccessible from the above access installation date to the end of the year – late December 2025. We will confirm Stage 2.4 installation date to the occupants that garages marked in green effect.

Strata Partners will issue a letter to owners/occupants with garages affected by Stage 2 access equipment, so they are able to apply for a residential parking permit for the duration of the stage 2 works.



**Name:** Cory Richardson  
**Position:** Site Manager  
**Number:** 0424 189 225  
**Email:** cory@prestech.com.au

**Name:** Olivia Burcham  
**Position:** Contract Administrator  
**Number:** 0432 185 884  
**Email:** olivia@prestech.com.au